

Instruction Booklet

RX-105 FREE STANDING

Please read all instructions
carefully before opening box



1

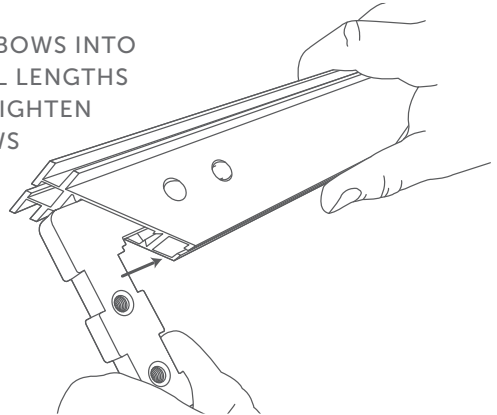
PULL YOUR REXframe®
FABRIC OUT OF THE BOX
& UNWRAP YOUR
EXTRUSION

CAREFUL NOT TO CUT
INTO THE BAGS OR THE BOX
AS YOU COULD DAMAGE
THE FABRIC



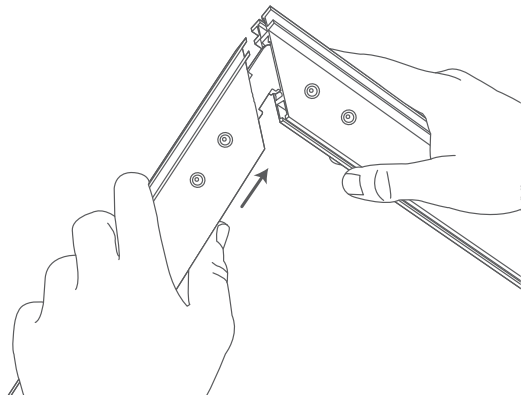
2

INSERT THE HEAVY DUTY ELBOWS INTO
EITHER SIDE OF X2 PARALLEL LENGTHS
OF EXTRUSION AND HAND TIGHTEN
USING THE SUPPLIED SCREWS



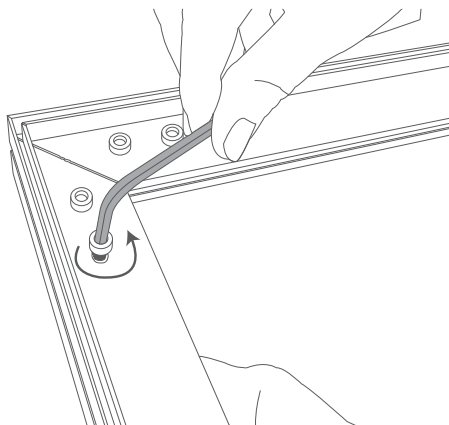
3

INSERT THE VERTICAL
LENGTHS



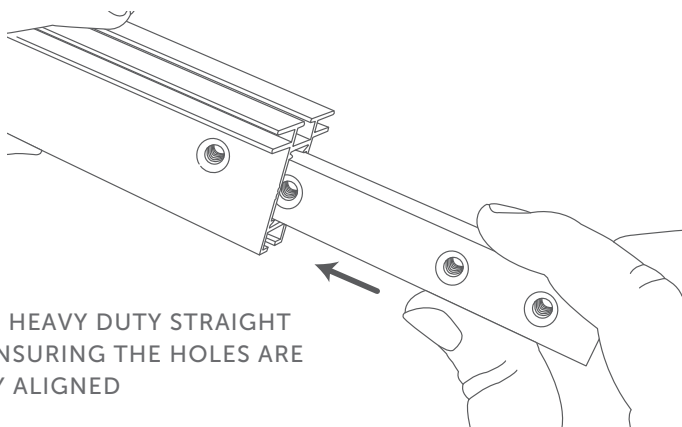
4

TIGHTEN THE SCREWS
USING THE SUPPLIED
ALLEN KEY ON EACH
CORNER



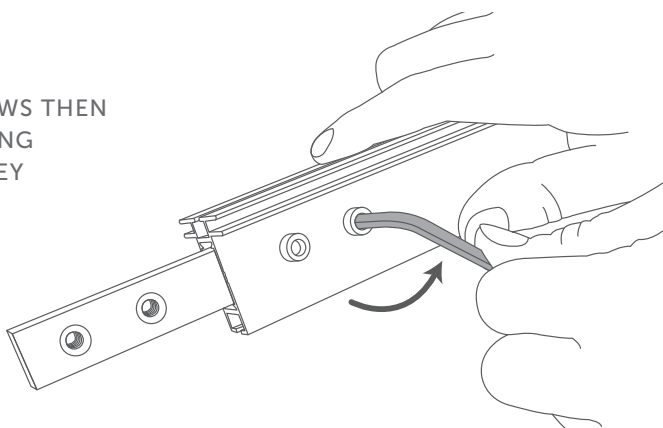
5

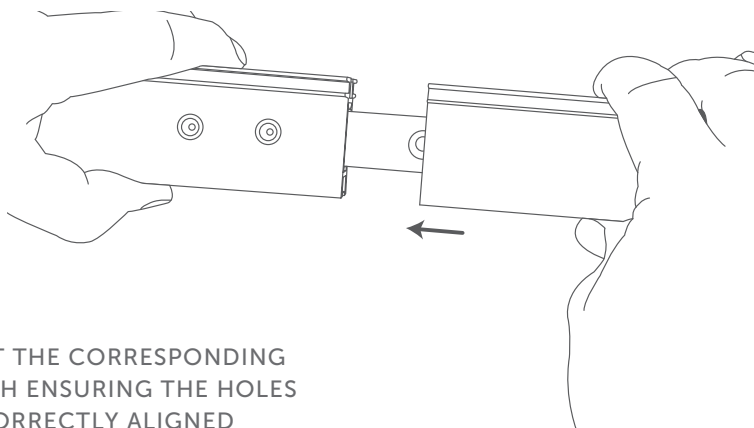
INSERT THE HEAVY DUTY STRAIGHT
JOINERS, ENSURING THE HOLES ARE
CORRECTLY ALIGNED



6

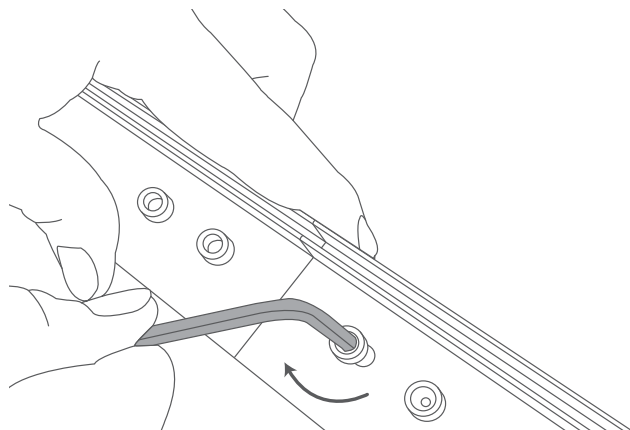
INSERT SCREWS THEN
TIGHTEN USING
THE ALLEN KEY





7

INSERT THE CORRESPONDING
LENGTH ENSURING THE HOLES
ARE CORRECTLY ALIGNED

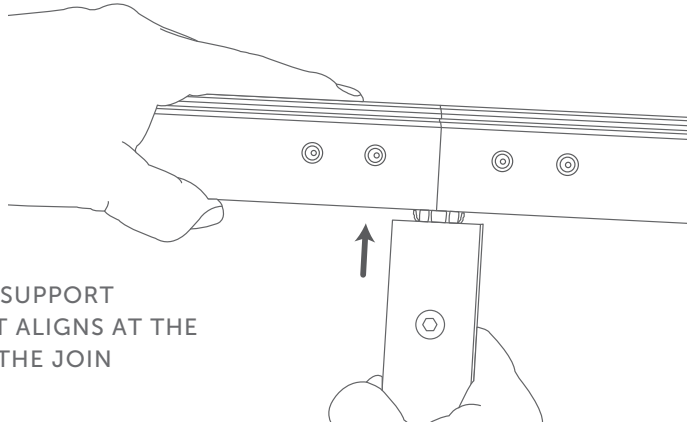


8

INSERT AND TIGHTEN
THE SCREWS USING
THE ALLEN KEY

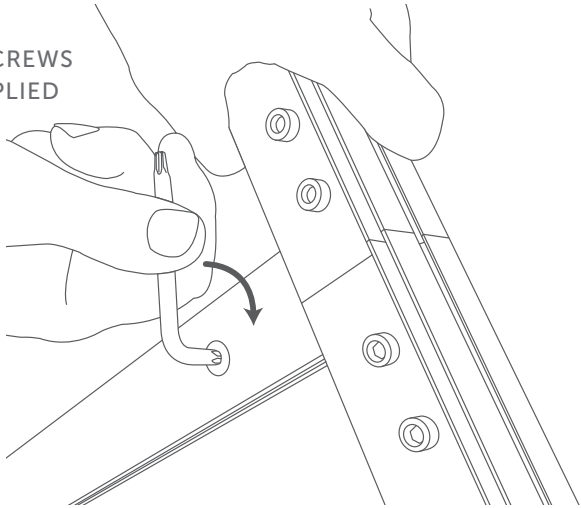
9

INSERT THE SUPPORT
ENSURING IT ALIGNS AT THE
CENTRE OF THE JOIN



10

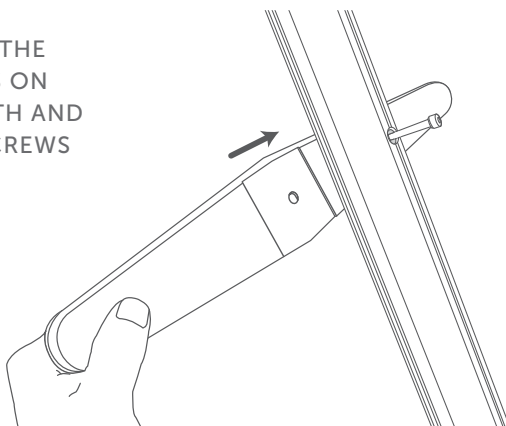
TIGHTEN THE SCREWS
USING THE SUPPLIED
LOCK KEY



Inserting Supports

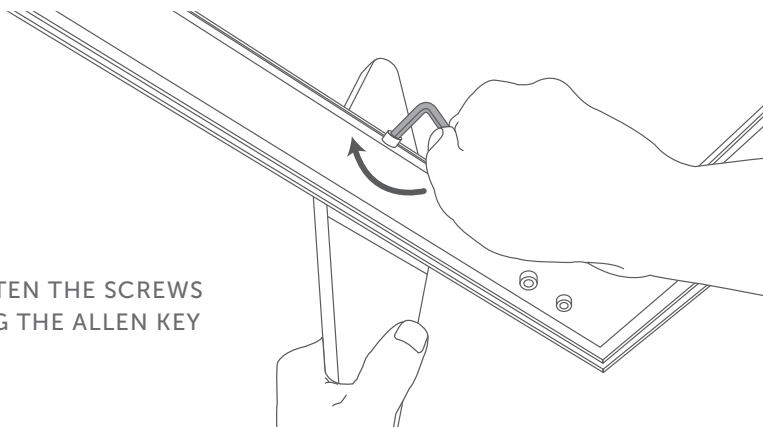
11

ALIGN THE FEET TO THE
PRE-DRILLED HOLES ON
THE BOTTOM LENGTH AND
INSERT SUPPLIED SCREWS



12

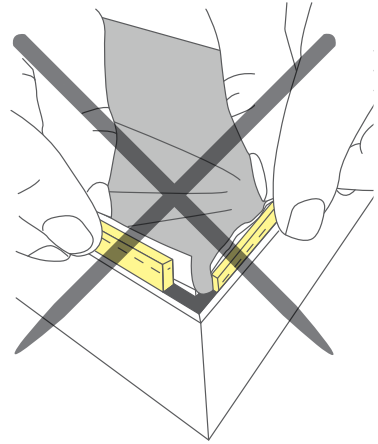
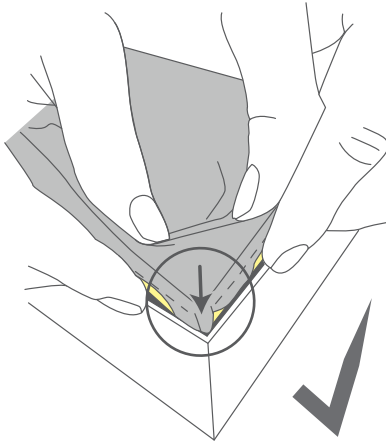
TIGHTEN THE SCREWS
USING THE ALLEN KEY



Inserting Feet

13

INSERT THE FABRIC INTO THE EXTRUSION STARTING WITH THE CORNERS ENSURE THE SILICON GASKET IS CONCEALED

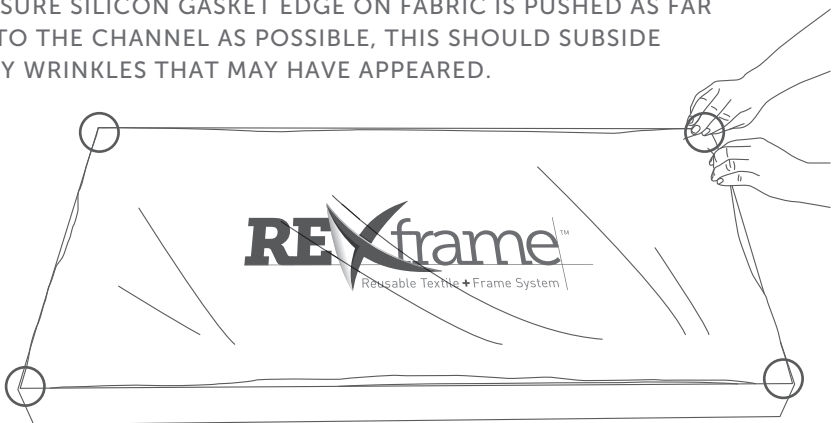


14

FOLLOW THE DIAGRAM BELOW FOR THE REMAINING SILICON GASKET EDGE.

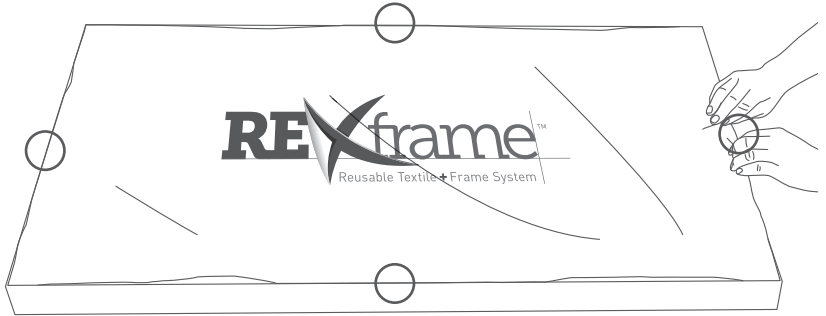
STARTING WITH ALL CORNERS

ENSURE SILICON GASKET EDGE ON FABRIC IS PUSHED AS FAR INTO THE CHANNEL AS POSSIBLE, THIS SHOULD SUBSIDE ANY WRINKLES THAT MAY HAVE APPEARED.



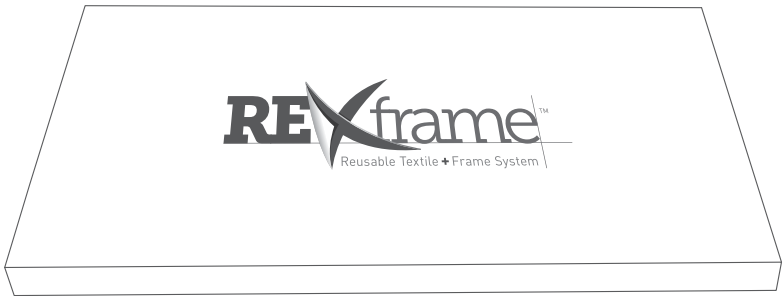
Inserting Fabric

15



CONTINUE WITH THE MIDDLE OF EACH LENGTH,
AND THEN THE REMAINDER OF THE FABRIC

16



CONTINUE UNTIL ALL THE FABRIC HAS BEEN FULLY INSERTED